

INSTRUCTIONS

drain drizzler DIY

drain drizzler

DD DIY Installation

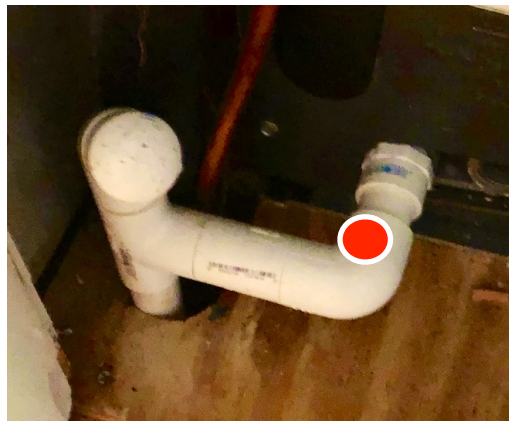
DIY, Model DD2

YOU WILL NEED:

- One Drain Drizzler DIY Kit
- Phillips #2 Screwdriver
- Drill and 5/32" (4 mm) drill bit
- White vinegar
- An electrical outlet near the air handler



Step 1: Install the Drain Barb



Locate the A/C drain coming out of the handler and drill a 5/32" (4 mm) hole through the TOP of the pipe (or fitting) close to the A/C handler as shown by the red spots.

***** DO NOT DRILL THROUGH THE BOTTOM OF THE PIPE *****



Screw the M5 thread-forming screw (left) into the 5/32" (4 mm) hole and remove it. Gently screw the barb (right) into the threaded hole finger-tight only.



Step 2: Mount the Drain Drizzler

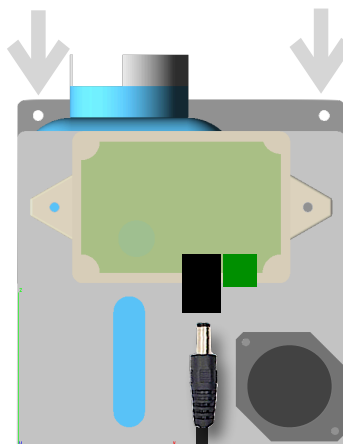
Find a suitable location that allows the power wire to reach the outlet and the vinyl tubing to reach the Tee barb. The Drain Drizzler can be placed on a shelf and may be screwed in place. You can attach Drain Drizzler to any vertical surface using the mounting holes provided. Add the Tee barb and tubing above the drain barb as shown.

If there is no outlet near the air handler we suggest Drain Drizzler PRO which can run on the AC power from air handlers or bell transformers.

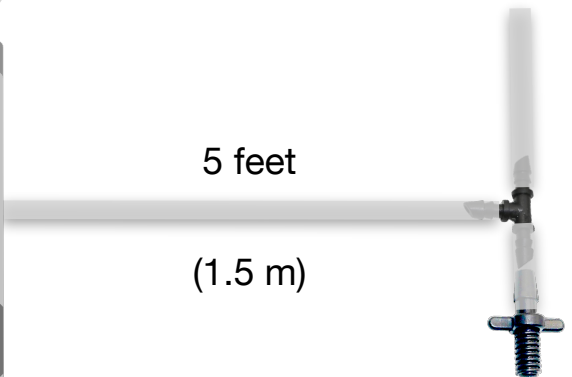


6 feet
(1.8 m)

Optional mounting holes

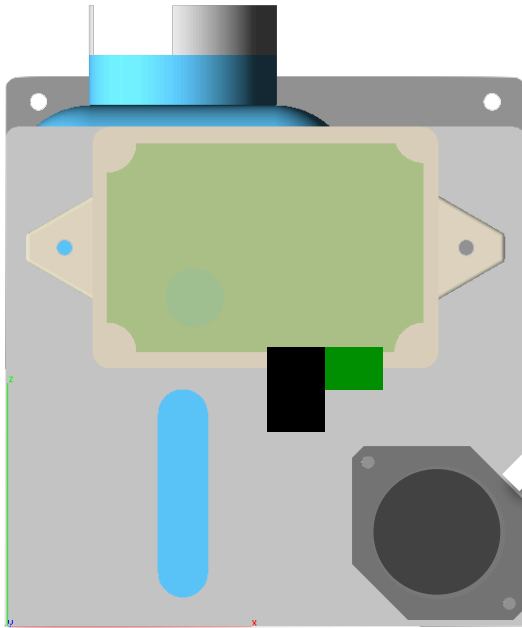


Drain Drizzler can pump up or down to the Tee barb.

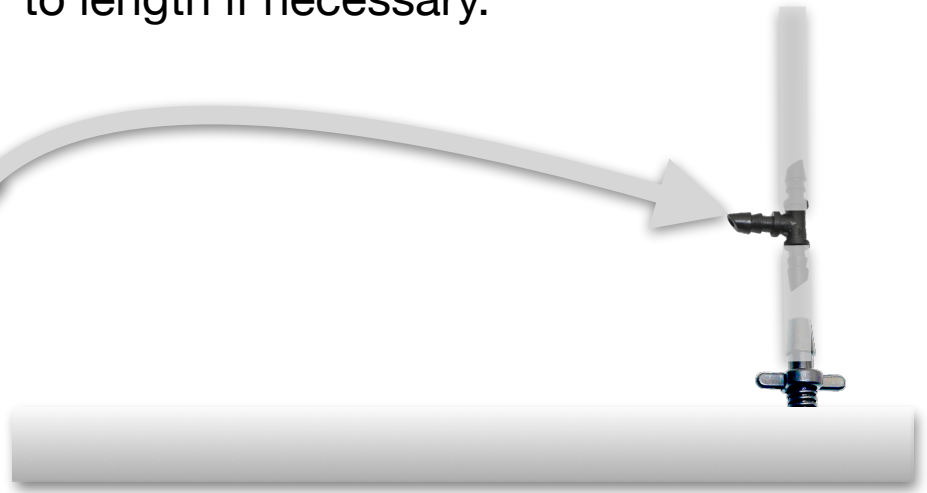


5 feet
(1.5 m)

Step 3: Connect Vinyl Tubing



Connect one end of the vinyl tubing to the pump outlet and the other end to the Tee barb as shown. Cut vinyl tubing to length if necessary.



Step 4: Add Vinegar



Unscrew the cap and lift out the intake tubing. Remove the bottle. Fill with any White Vinegar. Replace the bottle with the label facing the back and screw on the lid. Make sure that the intake barb is at the bottom of the bottle. The 16 oz (500 ml) can last for months.

More on website: <https://draindrizzler.com/care/>

We suggest you check the vinegar level every couple of months, but especially before the start of the Summer algae season.

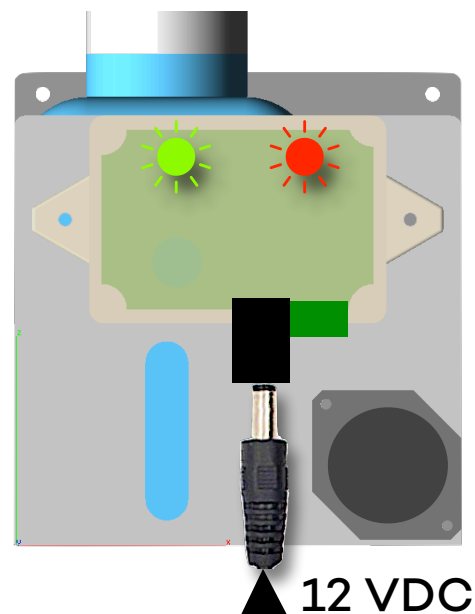
Step 5: Power using DC Adapter

Plug in the DC Adapter provided.
Connect the other end to the Drain
Drizzler DC power input.



***** 12V DC ONLY *****

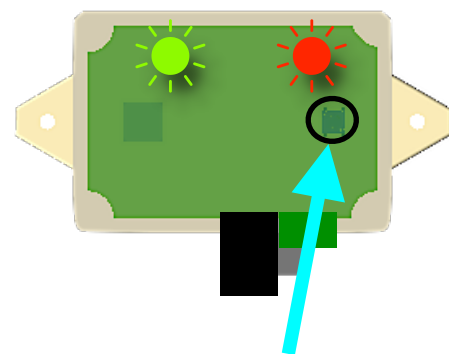
The green LED shows that power is on. The red flashing LED shows that Drain Drizzler is running.



Step 6: Prime the Pump

The primer switch is behind the hole in the control box cover. Using the supplied wooden rod, press the switch until vinegar flows along the tubing and reaches the barb.

Your Drain Drizzler is set up. That was easy.



Primer
Switch

Step 7: Register



That's it, you're done!

Algaenon is on your Drain Drizzler team!

A little often is the secret to controlling algae. Drain Drizzler kills algae in the A/C drain by pumping a small dose three times a day.

Your algae's gone
with Algaenon

Like us on Facebook:

<https://www.facebook.com>

Register the Drain Drizzler and we will remind you to check the white vinegar level.

<https://draindrizzler.com/register/>

For detailed specifications and support, visit our website:

<https://draindrizzler.com>