

INSTRUCTIONS

drain drizzler pro

drain drizzler

Drain Drizzler PRO Installation

PRO, Model DD3

YOU WILL NEED:

A Drain Drizzler PRO Kit

Wire strippers

Drill and 5/32" (4 mm) drill bit

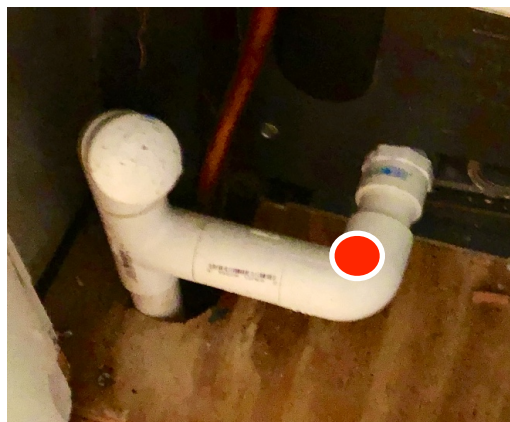
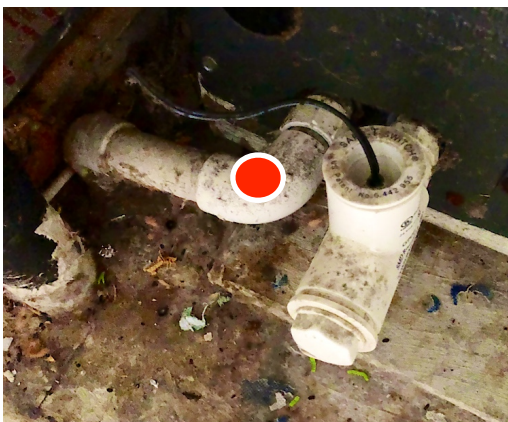
Phillips (#2) and small blade screwdrivers

White vinegar

More on website: <https://draindrizzler.com/pro/>



Step 1: Install the Drain Barb



Locate the A/C condensate drain coming out of the handler. Drill a 5/32" (4 mm) hole through the TOP of the pipe (or fitting) close to the air handler, but away from a panel, as shown by the red spots.

***** DO NOT DRILL THROUGH THE BOTTOM OF THE PIPE *****

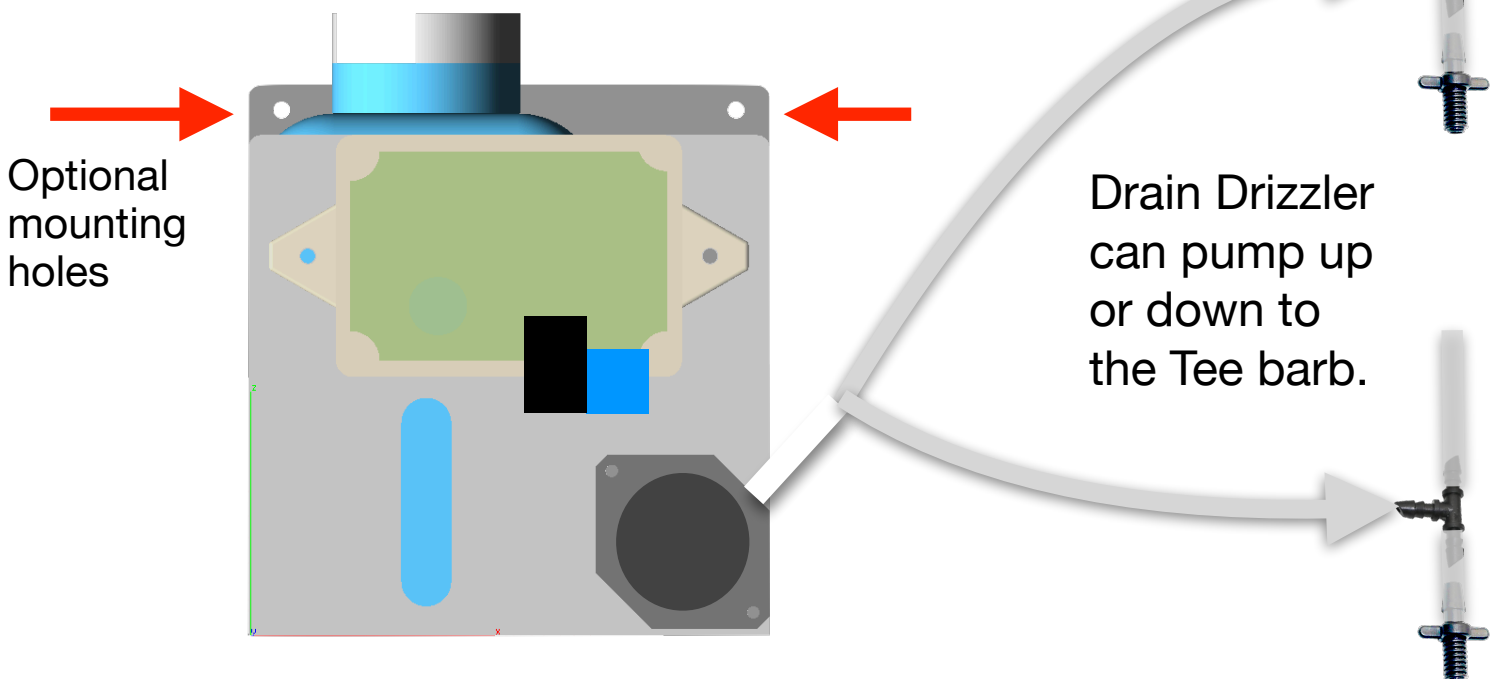


Screw the M5 thread-forming screw (left) into the 5/32" (4 mm) hole and then remove it. Gently screw the barb (right) into the threaded hole finger-tight only. Add the Tee and tubing above the drain barb as shown in Steps 2 and 3.

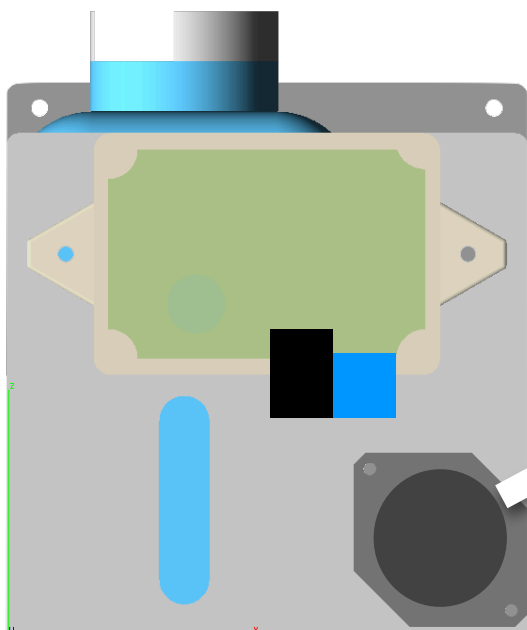


Step 2: Mount the Drain Drizzler

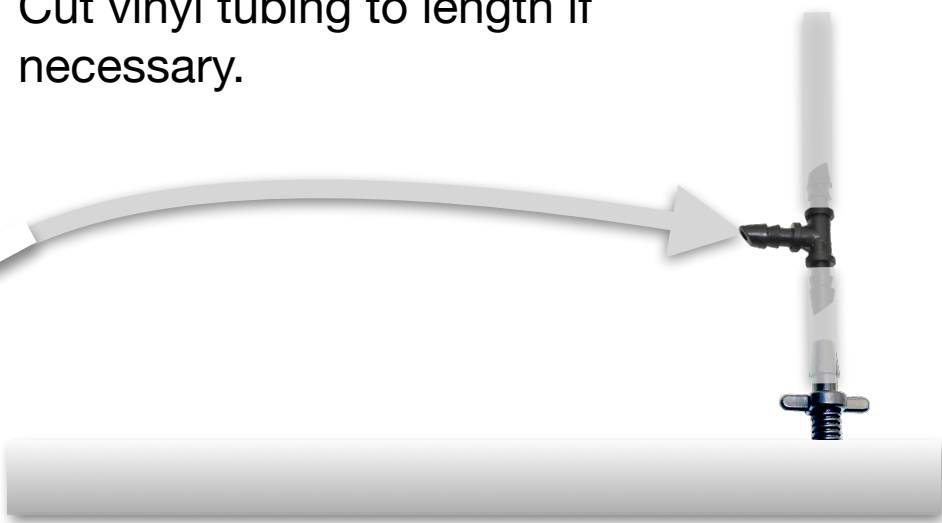
Find a suitable location that allows the power cord and vinyl tubing to reach. The Drain Drizzler can be placed on a shelf and may also be screwed in place. You can attach Drain Drizzler to any vertical surface using the mounting holes provided.



Step 3: Add Vinyl Tubing



Connect one end of the vinyl tubing to the pump outlet barb and the other end to the Tee attached to the drain barb. Cut vinyl tubing to length if necessary.



Step 4: Pick a Convenient Power Source

The versatile Drain Drizzler PRO can accept a range of power sources, including:

- 12-24 VAC from a doorbell transformer. (Easiest)
- 24 VAC from the Air Handler transformer. (Needs electrical skills)
- 12 VDC from a DC adapter. (Costs more)

More on website: <https://draindrizzler.com/instructions/>

***** DO NOT USE 110V *****

We recommend fork crimps for bell transformers.

1/4" (6.35mm) piggyback crimps for most Air Handler transformers.

3/16" (4.75mm) piggyback crimps for some Air Handler transformers

Tubing, wire and crimps are in the Installer Kit, available separately.

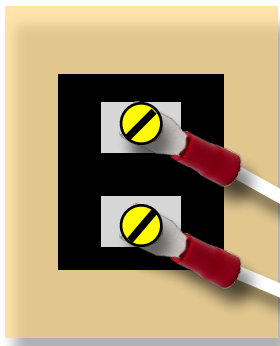


Step 4a: AC Power using a Bell Transformer

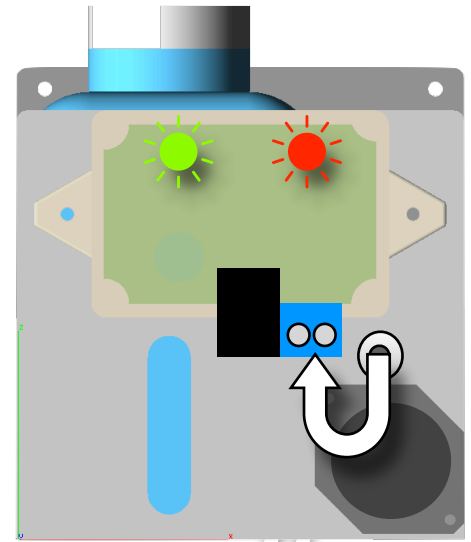
Strip the white wire ends and connect to a 12-24 VAC doorbell transformer. Feed the other end behind the panel, forward through the grommet and the other end to the Drain Drizzler AC screw terminals.

12-24 VAC

***** DO NOT USE 110V *****



The green LED shows that power is on. The red flashing LED shows that Drain Drizzler is running.

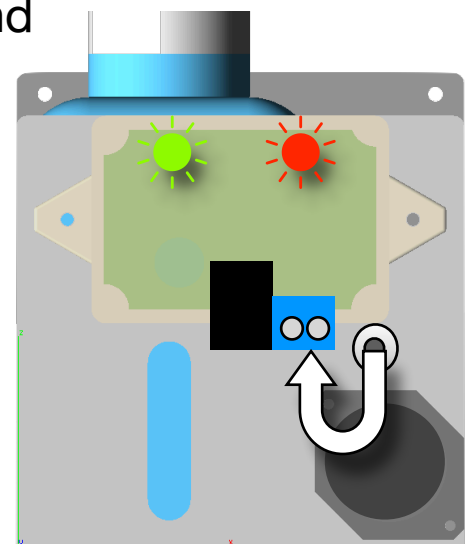
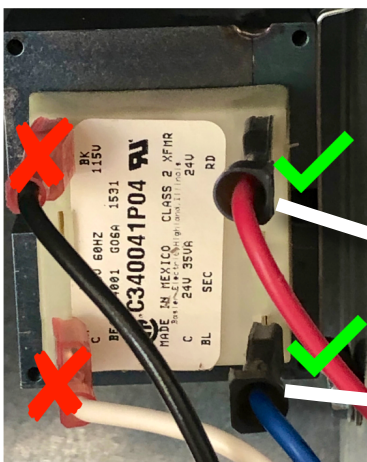


Step 4b: AC Power from the Air Handler

This method is intended for A/C Professionals and Electricians. Use only the 24 VAC from the transformer secondary as shown. Check voltage with a meter. Turn off power at the breaker. Opening air handler may affect A/C warranty.

***** DO NOT USE 110V *****

Strip the white wire ends and connect one end to the Air Handler 24 VAC transformer. Feed the other end behind the panel, forward through the grommet and the other end to the Drain Drizzler AC terminals.



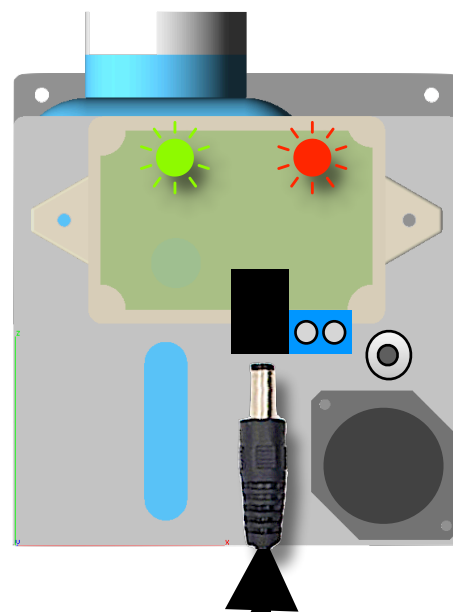
Step 4c: DC Power using an Adapter

If there is no convenient AC power, plug in a 12 VDC Adapter and connect the other end to the Drain Drizzler DC power connector as shown.



***** 12V DC ONLY *****

The green LED shows that power is on. The red flashing LED shows that Drain Drizzler is running.



Step 5: Add Vinegar

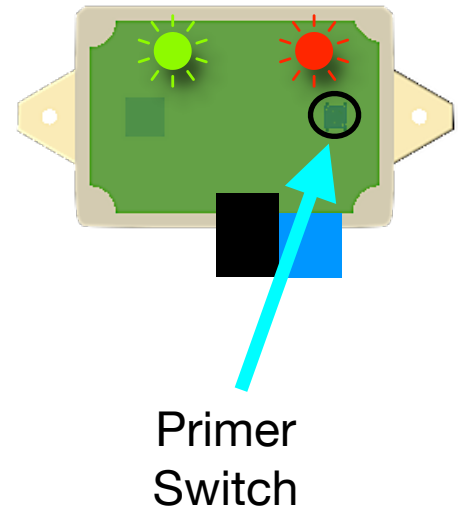


Unscrew the cap and lift out the intake tubing. Remove the bottle. Fill with any White Vinegar. Replace the bottle with the label facing the back and screw on the lid. Make sure that the intake pipe is at the bottom of the bottle. The 16 oz (500 ml) reservoir can last for months. More on website: <https://draindrizzler.com/care/> We suggest you check the vinegar level every couple of months, but particularly before the start of the Summer algae season.

Step 6: Prime the Pump

The primer switch is behind the hole on the control box cover. Using the supplied wooden rod, press the Primer Switch until vinegar flows along the vinyl tubing to the barb, then stop.

Note that when the pump is running the reservoir is illuminated allowing you to see the vinegar level. You can briefly press the Primer Switch to check.



Step 7: Register

That's it, you're done!
Algaenon is on your Drain Drizzler team!

Like us on Facebook:
<https://www.facebook.com>

Register the Drain Drizzler and we will
remind you to check the white vinegar level.
<https://draindrizzler.com/register/>



For detailed specifications and support, visit our website:
<https://draindrizzler.com>